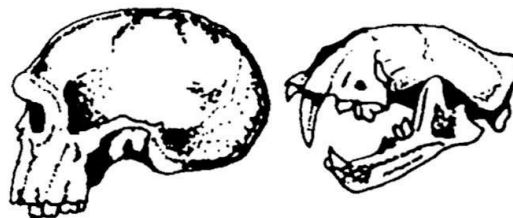


# Announcements

---

International  
Journal of

## OSTEOARCHAEOLOGY



A forum for the Publication of Papers Dealing with all Aspects of the Study of Human and Animal Bones from Archaeological Context.

### EDITORS

**Mrs. Ann Stirland and Dr. Tony Waldron**

Institute of Archaeology,  
31-34 Gordon Square, London,  
WC1H 0PY, UK

### AIMS AND SCOPE

The aim of the *International Journal of Osteoarchaeology* is to provide a forum for the publication of papers dealing with all aspects of the study of human and animal bones from archaeological contexts. The journal will publish original papers dealing with human or animal bone research from any area of the world. It will also publish short papers which give important preliminary observations from work in progress and it will publish book reviews. All papers will be subject to peer review.

Papers from any of the following principal areas of work would be considered for publication.

■ Palaeopathology ■ Physical Anthropology  
Epidemiology ■ Chemical analysis ■ Exploitation of animal resources ■ Taphonomy

The journal will be aimed principally towards all those with a professional interest in the study of human and animal bones. This includes archaeologists, anthropologists, human and animal bone specialists, palaeopathologists and medical historians. We also hope to attract and encourage students and others for whom this field is of serious but peripheral interest.

### SUBSCRIPTION DETAILS

Volume 5 (1995) Quarterly US\$225.00

Payable in the currency quoted or  
in Sterling using the current exchange rate  
(postage/air speed delivery included)

*Send for your free sample copy!*

Return to:  
Journal Subscriptions Department  
by post John Wiley & Sons Ltd.,  
Baffins Lane, Chichester,  
West Sussex, PO 19 1UD, UK  
by fax (1243) 775878

# Circaea



Association for  
Environmental Archaeology

*Circaea* is the journal of the Association for Environmental Archaeology (A.E.A.) and is published once a year, and sent to all members. It contains a wide range of material from short notes on methodology to substantial reports and systematic works. Everyone is encouraged to use *Circaea* as a vehicle for short articles, discussion, etc.

In addition, a *Newsleter* is published every three months (February, May, August, and November), giving information about forthcoming meetings and activities and acting as a general news sheet facility for the members of the Association (eg. it may be used to advertise jobs and publications, etc.). The association also publishes a *Members' Interest listing* from time to time giving a full listing of members, their addresses and interest. This is only circulated to other individual members and not to institutions such as libraries.

## *Who is entitled to join the A.E.A.?*

Anyone involved or actively interested in environmental archaeology is invited to join the Association. We ask that you inform us of your particular interests, but no qualifications are required. Institutional membership is also welcome, and membership is open to any institution. The annual subscription rate is 12.00 pounds sterling for individuals (6.00 pounds for students/unwaged) and 18.00 pounds sterling for institutions.

With certain exceptions, listed below, all payments must be made in pounds sterling-foreign currency is generally not acceptable due to the high handling charges made by the banks. Sterling

payments can be made in cash, by cheque (including Giro) drawn on a British bank, postal order, international money order or standing order (if a British bank account is held). A standing order form is available for those wishing to use this method of payment. All cheques should be made payable to *Association for Environmental Archaeology*.

## *Exceptions to sterling payments*

We are aware that overseas members may find it difficult or expensive to pay in sterling. In such circumstances we will accept foreign currencies under the following conditions, but note that foreign currency cheques are NOT acceptable:

*Cash:* add the equivalent of 2.00 pounds sterling to your amount to cover bank handling rates. The amount should be calculated at the current foreign exchange rate.

*Giro:* Giro transfer is possible-the AEA Giro account number is 21 976 8803 and the branches at which we hold accounts are St. Giles, Oxford and Queen's Road, Bristol. Your local post office will give you details of payment by this method (please add 2.00 pounds sterling to cover transfer charges).

All subscription enquiries should be made to:  
Dr. Rebecca Nicholson (Membership Secretary)  
Association for Environmental Archaeology,  
c/o Department of Archaeological Sciences,  
University of Bradford, Bradford, BD7 1DP  
U.K.

Fax: 01274-385190

E-mail: R.A.Nicholson @ Bradford.ac.uk



Departamento de Prehistoria  
Centro de Estudios Históricos  
Consejo Superior de Investigaciones Científicas

# TRABAJOS DE PREHISTORIA



## EDITORS

Carmen Cacho Quesada and M.<sup>a</sup> Isabel Martínez Navarrete

## EDITORIAL AND ADVISORY BOARD

María Belén Deamos, Gerhard Bosinski, Richard Bradley, Primitiva Bueno Ramírez, Jean Clottes, John Collis, Teresa Chapa Brunet, Robert W. Chapman, Germán Delibes de Castro, Jean Guilaine, Antonio Gilman Guillén, Manuel González Morales, Víctor S. Gonçalves, Susana O. Jorge, Emili Junyent, Jaime Litvak, Michael Kunst, Pilar López García, Bernardo Martí Oliver, Lorena Mirambell, Ignacio Montero Ruiz, Marcel Otte, Hermann Parzinger, Alicia Perea, Gustavo Politis, Gonzalo Ruiz Zapatero, Lawrence G. Straus, Cristóbal Veny Meliá and Juan M. Vicent García.

*Trabajos de Prehistoria is a specialized journal essential for every archaeologist interested in the Prehistory and Protohistory of the Iberian Peninsula. It stresses synthesis, interdisciplinary studies, papers on theory and method, and new trends in this developing discipline, being the only biannual periodical of its speciality published in Iberia. The continuous appearance of the journal, its general scope, and the quality of its content have given it a preeminent position in Iberia and an important one on the international scene.*

*Trabajos de Prehistoria* is edited by the spanish council for scientific research.

## The journal is interested in the following subjects:

**THEORY:** Theory and Methodology in Archaeology. Management of Archaeology. History of Archaeology. Archaeology and Politics.

**ENVIRONMENT:** Archaeobotany. Archaeozoology. Landscape Archaeology.

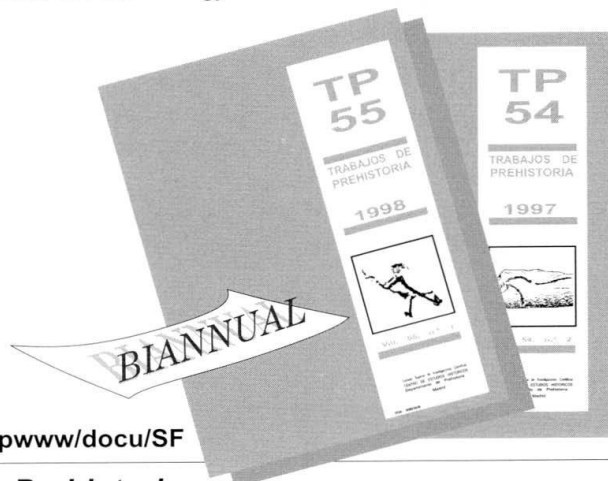
**CULTURE:** Prehistoric and Protohistoric Archaeology. The Palaeolithic. The Neolithic.

The Chalcolithic. The Bronze Age. The Iron Age.

**TECHNIC:** Absolute Dating. Archaeometry. Archaeometallurgy. Experimental technology.

Articles will be published in Spanish, English or French

**We encourage your collaboration with the journal!**



## Complete Data Bases:

<http://www.bdcscic.csic.es:8080/RTRAPRE/BASIS/rtrapre/rtpwww/docu/SF>

## SUBSCRIPTION FORM



### Servicio de Publicaciones

Telephone: 91 561 28 33 Fax: 91 562 96 34  
Vitrúvio, 8. 28006 Madrid (España)  
E-mail: [publ@orgc.csic.es](mailto:publ@orgc.csic.es)

## Trabajos de Prehistoria

Published in June and December

Name .....

Address .....

Country .....

Annual Subscription ☐

Single number ☐

☐ Cheque payable to Servicio de Publicaciones, CSIC

☐ Cash on delivery

☐ Proforma invoice

☐ Please debit my Visa/Mastercard/Maestro/edc/4B

Card number ..... Expiry Date .....

Date.....

Signature.....

Annual subscription: 8.200 Ptas.

Single: 5.000 Ptas.